

The B&B Italia Outdoor Timeless

2020

Ayana, Canasta '13, Gio, Hybrid,
Ray Outdoor Fabric, Ribes,
Mirto Outdoor, Ayana, Erica '19,
Erica, Husk Outdoor, Ayana,
Fiore, Ginepro, Link Outdoor,
Tobi-Ishi Outdoor, Awa Outdoor,
Colosseo Outdoor,
Fat-Fat Outdoor, Frank Outdoor,
Hospes, Springtime, Tramae



B&B Italia has been a leading company in the field of contemporary furnishings since its founding in 1966. The company's success is based on an unrivalled formula of creativity, innovation and industrial skill that produces timeless pieces to last a lifetime. In terms of aesthetics, form and quality of production, B&B Italia has distinguished itself as a leader in the elite Italian design world for over five decades.

B&B Italia is not only renowned for its beautiful furnishings but has contributed to the culture of industrial design. As a world-class pioneer in terms of technology, development and modern expression, B&B Italia continues to influence and innovate with contemporary language articulated in every detail.

This catalogue presents several selected items that B&B Italia has made available for delivery within 2 weeks. In California or on rare occasions, 2 week delivery may not be possible, as we replenish our stock on an ongoing basis. Each original B&B Italia piece is truly "Timeless."

To experience the entire B&B Italia collection we invite you to visit our showrooms or our nearest authorized dealers.

Please contact us via e-mail (info.usa@bebitalia.com) or telephone at 1-800-872-1697 for any inquiries or to locate the dealer nearest you.

General Index

06	Ayana Naoto Fukasawa
08	Canasta '13 Patricia Urquiola
10	Gio Antonio Citterio
12	Hybrid Antonio Citterio
16	Ray Outdoor Fabric Antonio Citterio
18	Ribes Antonio Citterio
22	Mirto Outdoor Antonio Citterio
24	Ayana Naoto Fukasawa
26	Erica '19 Antonio Citterio
28	Erica Antonio Citterio
30	Husk Outdoor Patricia Urquiola
34	Ayana Naoto Fukasawa
36	Fiore Naoto Fukasawa
38	Ginepro Antonio Citterio
42	Link Outdoor Jakob Wagner
44	Tobi-Ishi Outdoor Barber And Osgerby
46	Awa Outdoor Naoto Fukasawa
48	Colosseo Outdoor Naoto Fukasawa
50	Fat-Fat Outdoor Patricia Urquiola
52	Frank Outdoor Antonio Citterio
54	Hospes B&B Italia CR&S
56	Springtime Jean-Marie Massaud
58	Tramae unPIZZO

Ayana

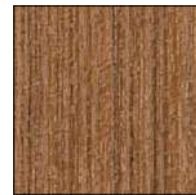
DESIGNED BY NAOTO FUKASAWA

Minimalist and innovative, the Ayana collection becomes a new chapter in the story that connects B&B Italia to Naoto Fukasawa. It sees wood as the protagonist, interpreted in an unusual way, with a pleasant oriental touch.

If the depths and heights are a clear reference to the south-east Asian tradition, the backrest recalls a Swedish wall bar, an exercise equipment turned into a load-bearing element. Thanks to this solution, the elements of the Ayana collection can be enjoyed and appreciated at 360 degrees, discovering on each side a new elegant interplay of intersections and proportions. Two and three seat sofas and the armchair have armrests at different heights.

The armchair armrest is higher to guarantee a more ergonomic seat. The sofa armrest, which is lower, can be combined with a cushion that is easy to be fastened and removed, and helps to lie down more comfortably if necessary.

The upholstery of this collection stands out for the individual cushions, all covered with waterproof fabrics. Ayana is a project with a green soul. The teak used to make the structures is FSC certified (Forest Stewardship Council) and all the materials that make up the various elements of the series, at the end of the product's life cycle, can be separated and disposed of with respect for the environment.



0456T
natural teakwood

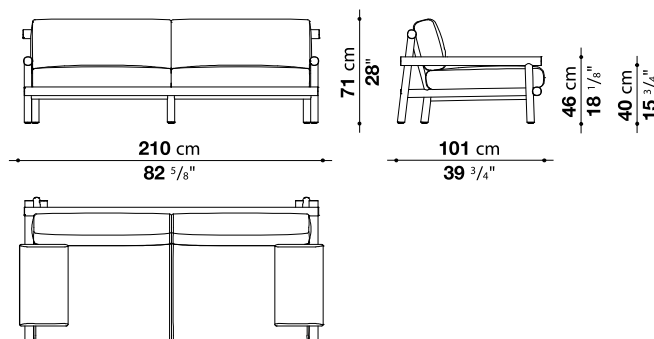


Seat and back
cushions
Linaria 207



Armrest cushions
Linaria 207

AY210



Sofa

Linaria 207, natural teakwood \$9,691



Canasta '13

DESIGNED BY PATRICIA URQUIOLA

Canasta '13 is given a tortora melange makeover with the new polyethylene fibre, creating an interlacing that evokes the Crinoline collection.

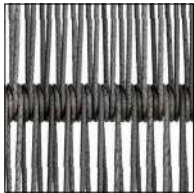
Comes with:
three 25 5/8" x 25 5/8" cushions
two 28 7/8" x 28 7/8" cushions
one 21 5/8" x 15 3/4" cushion



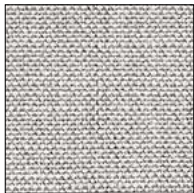
Large and middle
back cushions
Lipari 407



Rectangular
back cushions
Lipari 911

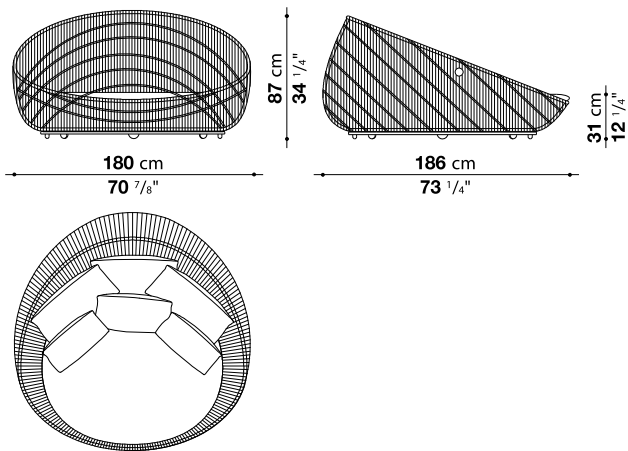


Interlacing:
Tortora



Seat cushion
Scirocco 253

CNC160P1



Lounge

Tortora interlacing, Scirooco 253,
Lipari 911 & Lipari 407
\$10,061



Gio

DESIGNED BY ANTONIO CITTERIO

Gio, designed by Antonio Citterio, is the new series with a contemporary classic accent dedicated to living in the open air. A complete range of sofas, end units, chaiselongue, sunbeds, armchairs, chairs, tables and complements which have been developed from solid teak structures with a special antique grey finish, which gives the wood a particular lived-in aspect and silver-grey reflective quality. Through the quick ship program the linear sofa 238 cm and the rectangular small table 120 cm are available.

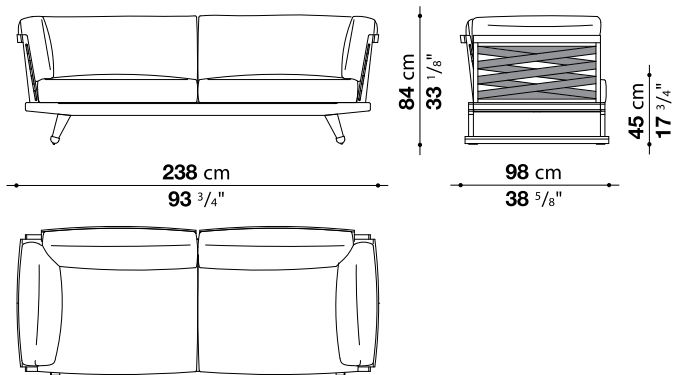


Elisir 420

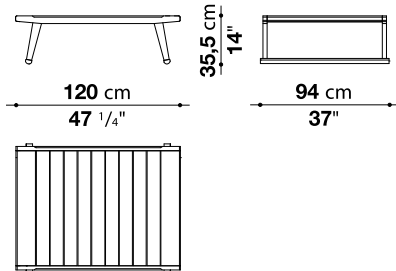


0492T
antique grey
teakwood

GO238



TG012



Sofa

Elisir 420, natural teakwood
\$ 13,136

Low Table

Natural teakwood
\$ 2,368



Hybrid

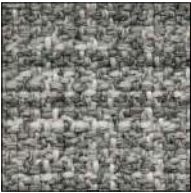
DESIGNED BY ANTONIO CITTERIO

After the great success of Ribes, Antonio Citterio developed some design ideas behind it and created Hybrid, an innovative new system of modular seating elements that it is so versatile it can be arranged into an almost infinite number of combinations. The key role of the textile dimension stands out immediately, with upholsteries that cover completely the generous padding, the absolute protagonist. These are typical elements of indoor furnishings, which find with Hybrid an outdoor interpretation. Hence the name of the collection, which is proposed as a real link between the inside and the outside of the house. Hybrid represents in fact the perfect furnishing element for climates and spaces that are defined by a continuous blend of inside and outside environments, with rooms that open to an en-plein-air dimension, and for living spaces integrated into terraces and gardens. The combination of opposites happens not only visually, but also through the sense of touch. Hybrid guarantees in fact the typical comfort of traditional upholstered furniture for interiors, thanks to a new type of mattress seat conceived for outdoor furnishing.

The cushions are actually made with paddings with different densities, carefully designed to pleasantly accommodate the

body and support it at the same time, without sinking. The supporting structures are almost invisible, and the seat seems to float a few centimeters above the floor. The solid base is formed by a frame in extruded aluminum painted in he colours sage, clay and anthracite, and is completed by a platform with fiberglass slats. The backrest conceals an aluminum structure, covered with soft polyurethane, which is in turn covered with a padded sheath, completed with a cover in waterproof fabric. The platform is available in eight sizes and two depths, while the armrest and backrest come in two heights. To guarantee further comfort to the deeper seat, the low backrest can be raised with an additional headrest cushion. Additional cushions in various sizes enrich the range, offering countless design and chromatic solutions. The Hybrid collection also includes a series of new outdoor fabrics made with mélange polypropylene yarn in five colour variants that are accented by refined trims. Choices that confirm a decisive and elegant presence for interiors and outdoor spaces.

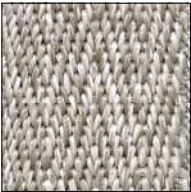
All the objects in the Hybrid collection can be dismantled completely. At the end of the life cycle, each individual element can be separated and disposed of following the path best suited to each material.



Sofa
Saturno 258



Sofa
Saturno 800

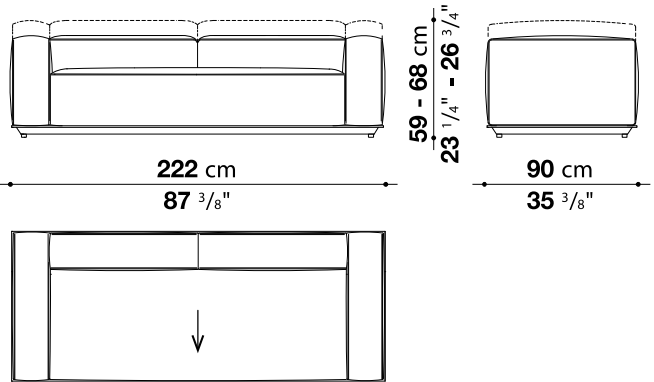


Profile
0082N natural



0236B
anthracite painted

9HY222



Hybrid

DESIGNED BY ANTONIO CITTERIO

Sofa

0082N Natural profile, anthracite frame
Grey Saturno 258 - \$12,042



Sofa

0082N Natural profile, anthracite frame
Blue Saturno 800 - \$12,042



Ray Outdoor Fabric

DESIGNED BY ANTONIO CITTERIO

Ray Outdoor Fabric features an interlacing ribbon pattern, created using polypropylene fibre that are resistant to UV rays and weathering. The range of colours, particularly suitable for outdoor environments, varies from turquoise to blue and from acid green to tortora through bright Bordeaux. The collection consists of sofas available in two depths as well as modular elements such as terminal elements or chaise longue and armchairs. Ray fabric left/right sectional sofas with interlacing are available through this program.



back and seat cushions
n. 2 RF72_50CW
n. 3 RF60_50CW
Silea 280



0428T
tortora Interlacing



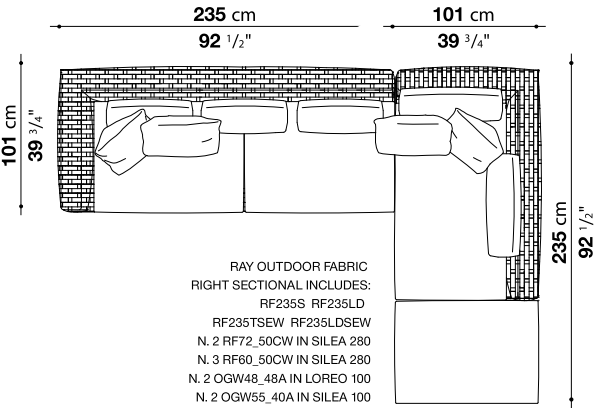
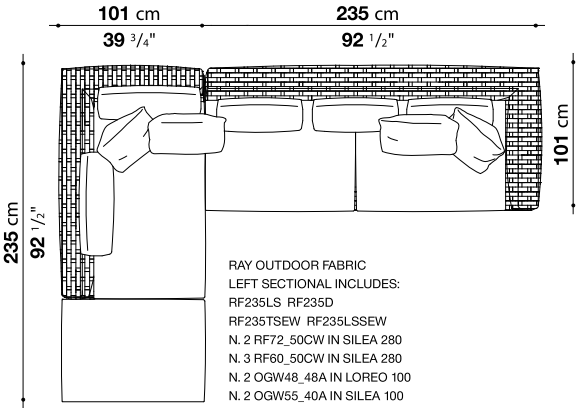
n. 2 throw pillow
OGW48_48A
48 x 48 cm
Loreo 100



Frame
0236B
athracite painted



n. 2 throw pillow
55 x 40 cm
OGW55_40A
Silea 100



Sectional Sofa

Silea 280, Loreo 100, Silea 100 tortora
Interlacing, athracite painted\$ 23,173



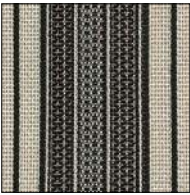
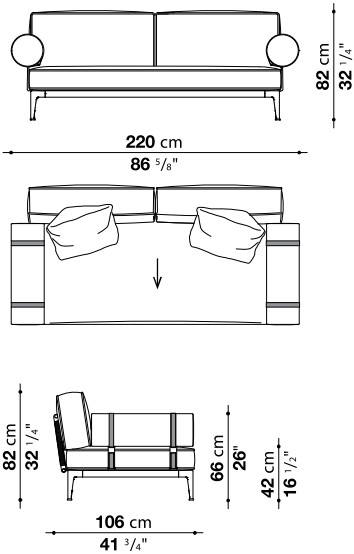
Ribes

DESIGNED BY ANTONIO CITTERIO

Ribes is the new modular seating system designed by Antonio Citterio with a focus on versatility, customisation, colour and research on materials.

Ribes Linear, comes with:
2 optional cushions (pillow style) RB48_48

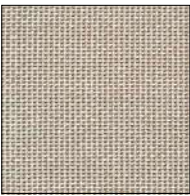
Ribes Linear
RBR220



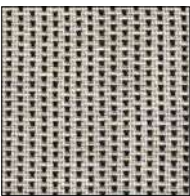
Back cushions
on linear sofa
Elisir 110



Seat cushions
on all sofas and
back cushions
for sectional sofa
Elisir 115



Throw pillows
Elisir 207



Rollers with
metallic support
Elisir 120



Frame
0236B
anthracite painted



Interlacing
0132N
anthracite
polypropylene



0075R
red profile
and belt

Sofa

Elisir 110, 115, 207 & 120
Red profile and belt, anthracite interlacing,
anthracite frame
\$11,383



Ribes

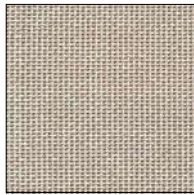
DESIGNED BY ANTONIO CITTERIO

Ribes is the new modular seating system designed by Antonio Citterio with a focus on versatility, customisation, colour and research on materials.

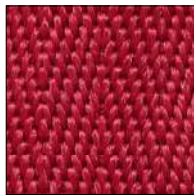
Ribes sectional, comes with:
2 optional cushions (pillow style) RB60_60
2 optional cushions (pillow style) RB48_48



Back and
Seat cushions
on all sofas and
back cushions
for sectional sofa
Elisir 115



Throw pillows
Elisir 207



0075R
red profile
and belt



Frame
0236B
anthracite painted

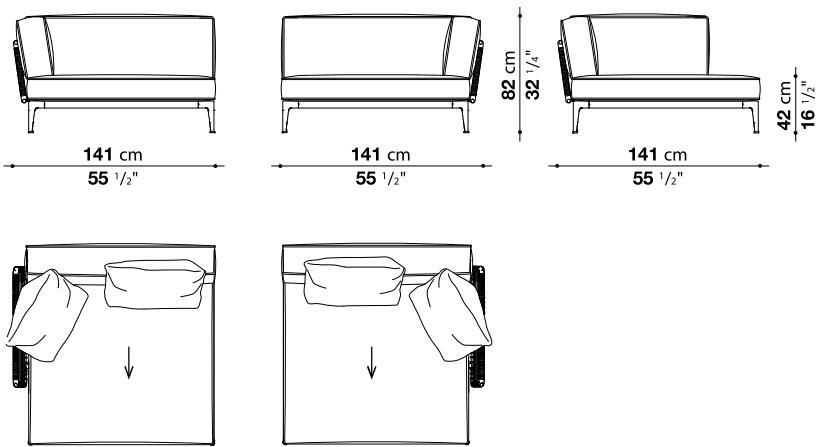


Interlacing
0132N
anthracite
polypropylene

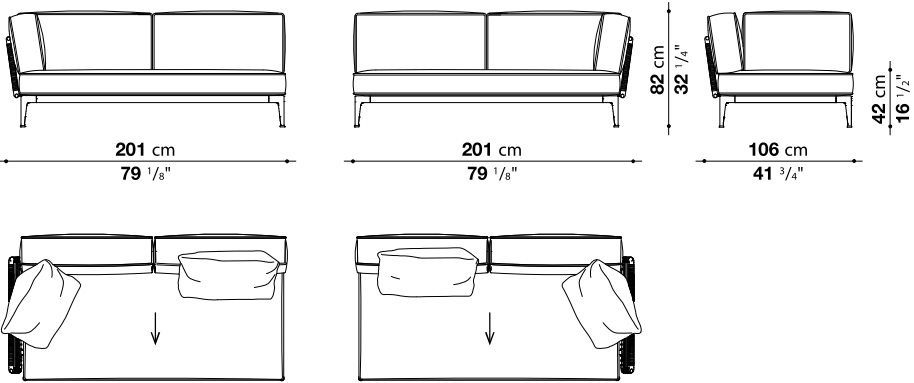


Sectional Sofa
Elisir 115 & 207
Red profile and belt, anthracite interlacing
anthracite frame
\$19,011

Ribes Sectional
RB141LB_3



RB201T_3

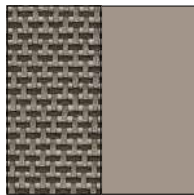


Mirto Outdoor

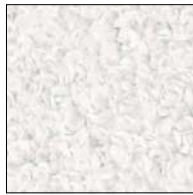
DESIGNED BY ANTONIO CITTERIO

A classic is born. Different types of seating: armchairs, chairs and a chaise longue are included in the collection. The folding armchair revisits the classic shape of a movie director's chair, with special details. The mesh and metal parts are finished in two colours, white and tortora, creating two colorway options in a single colour. The table and small table have the same frame and top in painted aluminium and are available in select colors. The collection expresses Antonio Citterio's stable elegance.

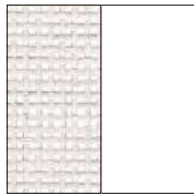
"Set of small mattress, headrest cushion and cover is also available separately".



2445280
Stige tortora



Elide 100

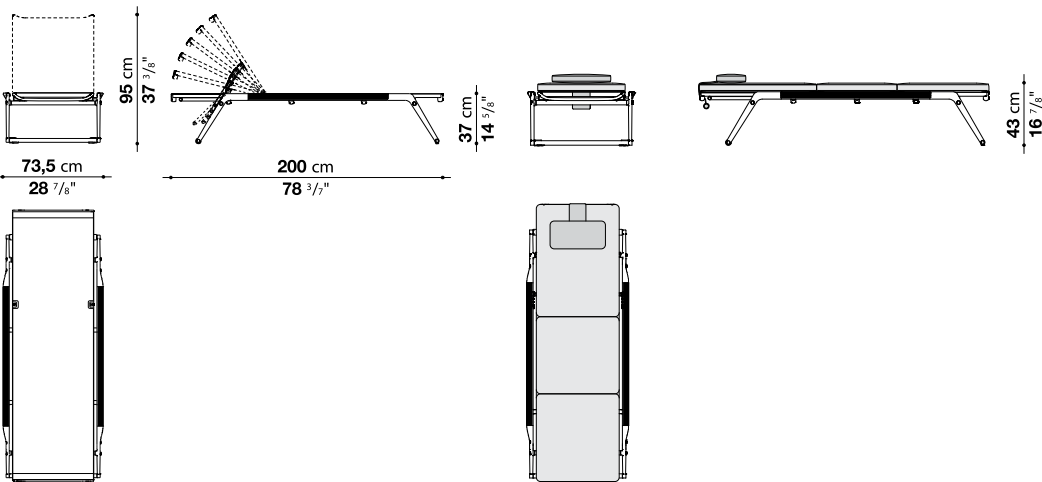


Stige 2445102
Stige natural white



Bali 100

MI200CL



Chaise Lounge

Stige 280, tortora frame - \$ 4,270
Stige 100, white frame - \$ 4,270
Set mattress & cover
Elide 100 / Bali 100 - \$ 1,623



Ayana

DESIGNED BY NAOTO FUKASAWA

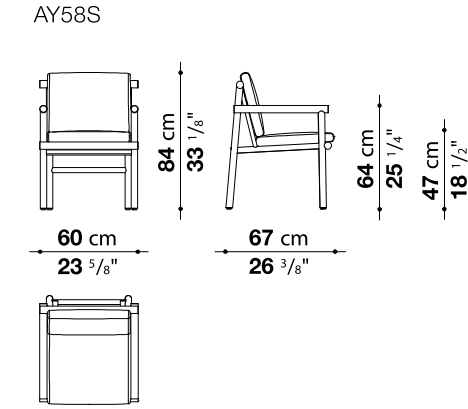
Ayana's warm minimalism is completed with a chair, a dining table and a low table. The dining chair recalls the stylistic features of the other seats, for a perfect family feeling, with the structure in natural teak wood and two generously padded cushions covered in fabric. Ayana is a project with a green soul. The teak used to make the structures is FSC certified (Forest Stewardship Council) and all the materials that make up the various elements of the series, at the end of the product's life cycle, can be separated and disposed of with respect for the environment.



0456T
natural teakwood



Seat and
back cushions
Liri 830



Chair
Liri 830, natural teakwood
\$ 2,067

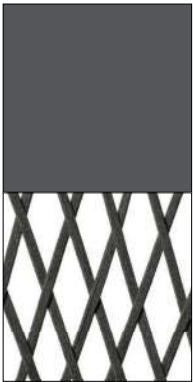
The pictures are indicative and differs from the product for sale, please refer to technical drawing and does not represent the colour of product in quick ship delivery".



Erica '19

DESIGNED BY ANTONIO CITTERIO

The Erica collection of sofas, armchairs and small chairs that was so successfully launched in 2017 has been enhanced by new sofas, still based on the same characteristic curved backrest and interlacing as before but offering a deeper seat and lived-in appearance. The sofas come in three extra-comfortable sizes - the 170 cm and 216 cm styles with a 96 cm deep seat and the 153 cm version with a 140 cm seat - and the cushions have a different type of filling giving an even softer and more natural look and making them even more inviting. The unusual colour juxtaposition of frame and interlacing in anthracite, tortora or a frame in sage with natural-coloured interlacing can be complemented by a vast range of cushion covers, in an array of tones and designs, all co-ordinating with each other. There is also a chair with armrests with an brand new interlaced backrest.

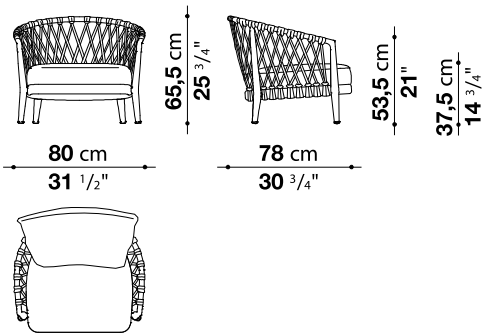


0625G
anthracite
polypropylene /
anthracite frame



Cushions
Agate 153

NE80P



Armchair

Agate 153, Anthracite painted
Anthracite polypropylene
\$3,537



Erica

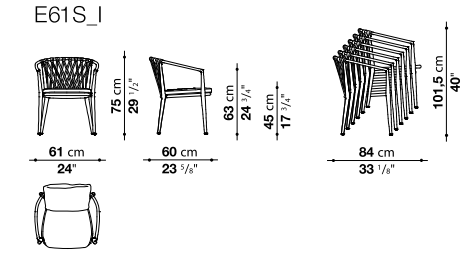
DESIGNED BY ANTONIO CITTERIO

Sofas, armchair, small armchair and chair, including a stackable version, offer a technological blend of extruded and die-cast aluminium elements. Their lightness and design makes them ideal for both public and residential settings, featuring seat and back cushions for ergonomic comfort together with strength for outdoor use. The painted frames are available in three finish combinations: white painted aluminium frame with tortora colour polypropylene fibre interlacing, tortora painted aluminium frame with tortora colour polypropylene fibre interlacing or anthracite painted aluminium frame with anthracite colour polypropylene fibre interlacing.



0625G
anthracite
polypropylene /
anthracite frame

Lesia 800



Dining Chair

Lesia 800, Anthracite painted
Anthracite polypropylene
\$1,811



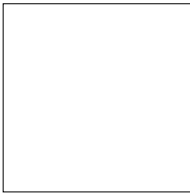
Husk Outdoor

DESIGNED BY PATRICIA URQUIOLA

Husk Outdoor chairs feature a hard shell made of Hirek® and a soft cushion. The shell, along fixed seat support, is available in white.



Shell
white Hirek®
plastic material

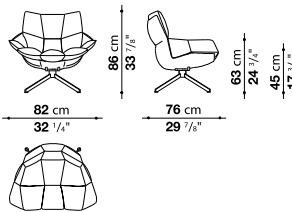


Frame
09010 white painted



Agate 287

H4



Armchair

White Hirek®, Agate 287
\$3,233



Husk Outdoor

DESIGNED BY PATRICIA URQUIOLA

The dining chair version completes the Husk Outdoor collection, which meets a variety of size and functional needs. The shell is available only in white; the four legs are in white or black painted metal.



Shell
white Hirek®
plastic material

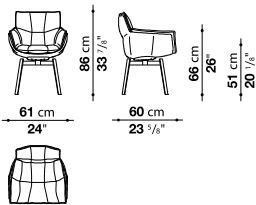


Frame
09010 white painted



Elisir 207

HK1N



Armchair
White Baydur®, Elisir 207
\$ 1,652



Ayana

DESIGNED BY NAOTO FUKASAWA

The table stands out for its oval top in serpentine, a typical stone of the Alps. The supporting structure in natural teak appears light but is extremely robust, able to resist weather and support the heavy top. Ayana is a project with a green soul. The teak used to make the structures is FSC certified (Forest Stewardship Council) and all the materials that make up the various elements of the series, at the end of the product's life cycle, can be separated and disposed of with respect for the environment.

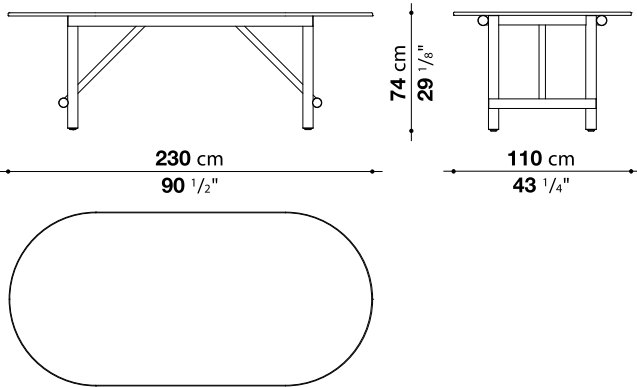


0456T
natural teakwood



0408S
Serpentine stone

TAY230



Table

Natural teakwood,
Serpentine stone
\$6,539



Fiore

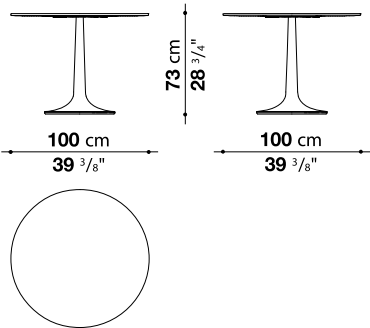
DESIGNED BY NAOTO FUKASAWA

Fiore is a collection of dining tables with small sizes and small tables that stand out for their perfect formal balance and for the striking texture of their cement finish, available in white cement finish through this program.

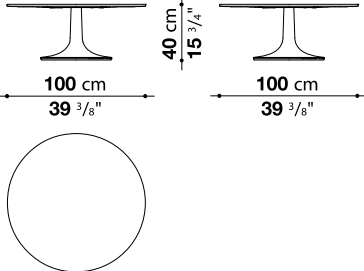


0159B
white cement

TF100RA



TF100RB



Table

Round dining - White cement - \$ 2,717
Round low - White cement - \$ 2,615



Ginepro

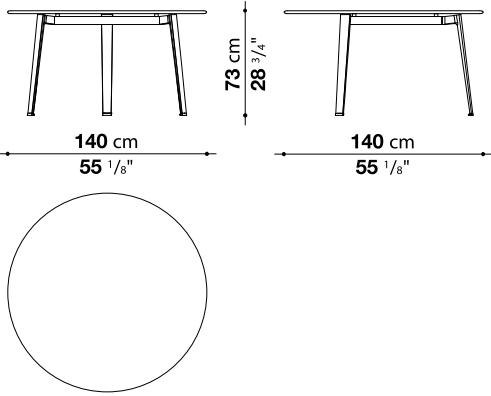
DESIGNED BY ANTONIO CITTERIO

The Ginepro table is made with an anthracite painted aluminum structure and a Serpentine stone top extremely durable and precious as the linear and timeless style.

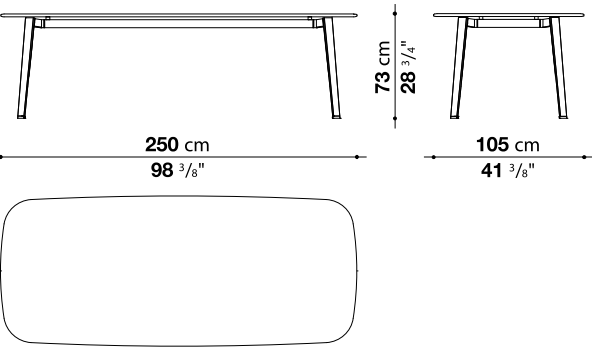
With its two shapes (round and rectangular with rounded corners) and four dimensions, it lends itself to be placed in different outdoor environments: terraces, verandas, patios and gardens.



TGS140R



TGS250



Dining Table
Anthracite painted, Serpentine stone
Round TGS14R - \$ 4,504
Rectangular TGS250 - \$ 6,539

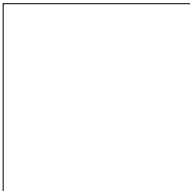




Link Outdoor

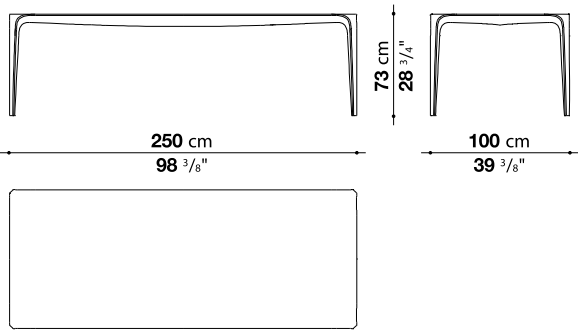
DESIGNED BY JAKOB WAGNER

A single piece, moulded, continuous, with no joints. The Link's distinguishing feature is its "soft" texture and the sensuality of its shape and material.
Made of Cristalplant Outdoor®, the table is cast in a single mould and does not require connecting elements.
The Link comes in a rectangular model which is produced only in a white colour.

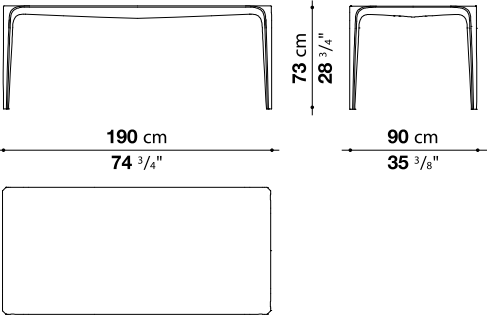


0101 G
white Cristalplant
Outdoor®

TLK250N



TLK190N



Dining Table
White Cristalplant Outdoor
TLK190N - \$ 9,079
TLK250N - \$ 12,143



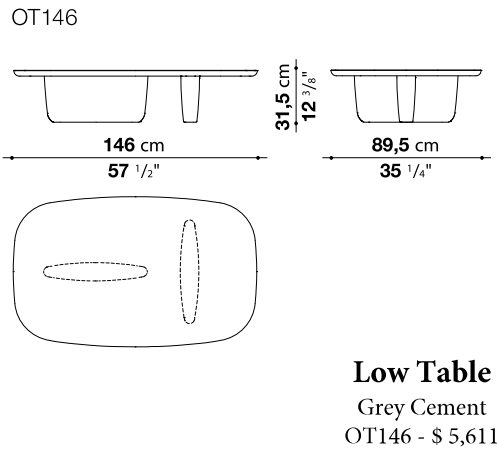
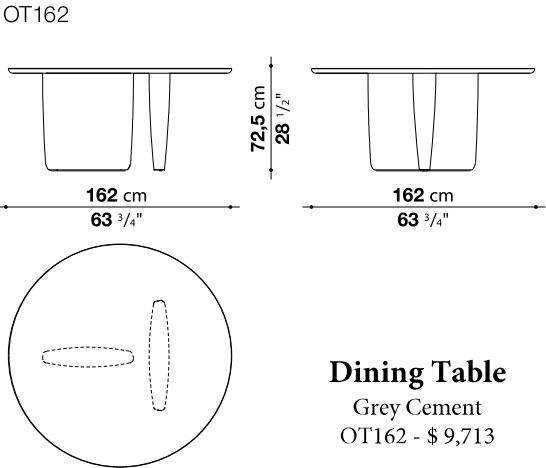
Tobi-Ishi Outdoor

DESIGNED BY BARBER AND OSGERBY

After the debut in the home collection, Edward Barber & Jay Osgerby design Tobi-Ishi Outdoor, the outdoor version of the iconic round dining table and of the small table clearly inspired by Zen. The overhang of the table and the vertical trapezoidal bases set at right angles generate an essential sculptural figure that appears to change shape depending on the point of observation. Exclusively made of cement, Tobi-Ishi Outdoor comes in two colour variants, grey and anthracite.



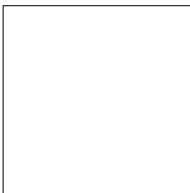
0237G
grey cement



Awa Outdoor

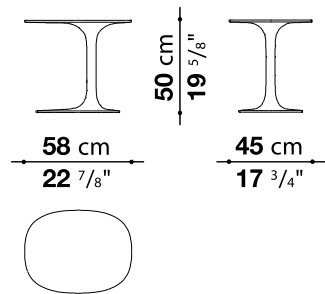
DESIGNED BY NAOTO FUKASAWA

The Awa is an elegantly asymmetrical table given outdoor functionality by a new type of Cristalplant Outdoor® material.



0101 G
white Cristalplant
Outdoor®

TA1



Side Table

White Cristalplant Outdoor
\$ 1,660



Colosseo Outdoor

DESIGNED BY NAOTO FUKASAWA

In 2020 Colosseo debuts outdoor in the new porcelain stoneware version in sage and clay colors. A furnishing element with various functions depending on the occasion and need (coffee table and pouf). Colosseo takes its name from the designer's inspiration. Naoto Fukasawa has in fact arrived at the desired shape thinking of a solid in the shape of an upside-down truncated cone, creating an assonance with the structure of the famous Roman arena.

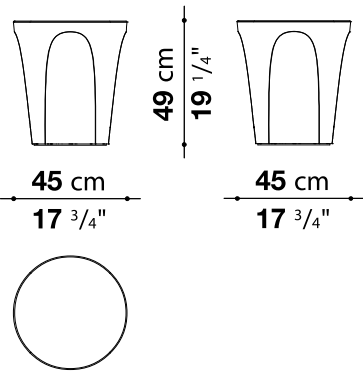


0416S
sage stoneware



0302A
clay stoneware

OCL45T



Small Table

0416S sage stoneware - \$1,024
0302S clay stoneware - \$1,024



Fat-Fat Outdoor

DESIGNED BY PATRICIA URQUIOLA

The concept of a tray helped create three small outdoor tables with steel frames that give them a lightweight look. These small tables are entirely painted in the finishes anthracite, tortora, sage and clay or with tops in porcelain stoneware.

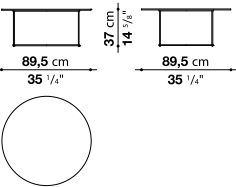


0236B
anthracite painted

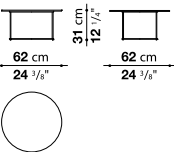


0355N
anthracite stone
porcelain stoneware

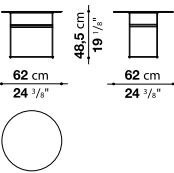
OTF92G



OTF62G



OTF62AG



Small Table

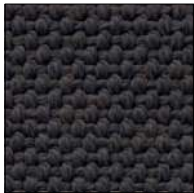
Anthracite stoneware top - anthracite base
OTF62G - \$ 1,612
OTF62AG - \$ 2,014
OTF92G - \$ 2,175



Frank Outdoor

DESIGNED BY ANTONIO CITTERIO

This outdoor ottomans have contrasting profiles matched to colourful outdoor fabrics to provide a touch of colour to your outdoor furnishings.



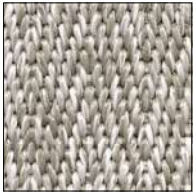
Lesia 255



Lesia 280

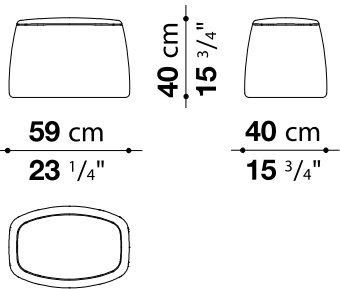


0075R
red profile



0082N
natural profile

OF58P



Ottoman

Red profile, Lesia 255 - \$ 1,210
Natural profile, Lesia 280 - \$1,210



Hospes

DESIGNED BY B&B ITALIA CR&S - 2020

The B&B Italia's Research & Development Centre has developed Hospes, an extremely versatile ottoman that is at its best in any room. A dynamic complement that can be used in different ways and fits perfectly with different product families. Made in two sizes and three colors - overseas blue, stone, anthracite - it is based on a robust aluminum frame covered with an interlacing of waterproof ropes. On top, the interlacing is held up by webbing that provides support and comfort.

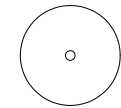
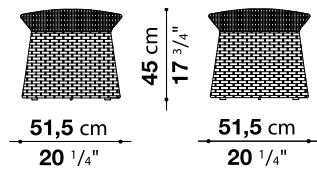


0835B
overseas blu
polypropylene

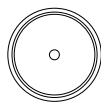
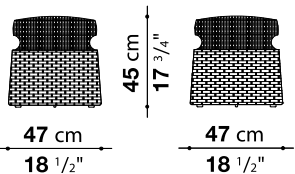


0133A
anthracite
polypropylene

HE1



HE2



Ottoman

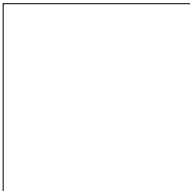
0835B Overseas Blue or 0133A
Anthracite polypropylene
HE1 - \$1,489
HE2 - \$1,489



Springtime

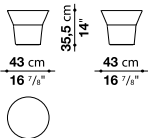
DESIGNED BY JEAN-MARIE MASSAUD

These decorative side tables, designed by Jean-Marie Massaud, are made in white Cristalplant Outdoor®.

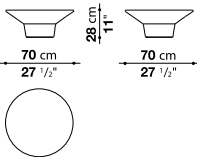


0101 G
White Cristalplant
Outdoor®

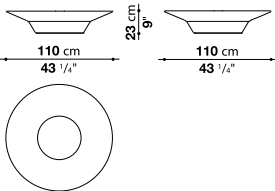
TST4



TST7



TST11



Service Element
White Cristalplant Outdoor
TST7 - \$1,817
TST4 - \$1,491
TST11 - \$4,091



Tramae

DESIGNED BY unPIZZO

unPIZZO, a design studio and textile handicrafts laboratory specialized in interlacing for furnishing, continues its research on the revival of ancient craft techniques with Tramae, a brand new ottoman for B&B Italia. Available in three dimensions, this small object full of character stands out for its hexagonal shape, which is rounded until the edges are no longer visible. The surface shows a singular dynamic mix of materials and colors that come to life through an exclusive weave that reinterprets the tradition of wicker basket making in a contemporary key. At the end of its lifespan, Tramae can be dismantled completely so that each component can be separated and disposed of in the best way for each material.

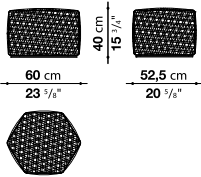


0843B
night blue
polypropylene

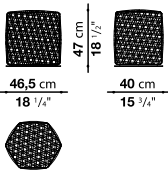


0296G
dark grey
polypropylene

TRM60P



TRM47P



Ottoman
0843B Night blue or
0296G Dark grey polypropylene
TRM47P - \$1,329
TRM60P - \$1,816



Outdoor cover and upholstery

OUTDOOR FABRIC

The threads in B&B Italia Outdoor fabrics offer excellent colour resistance to UV rays, brine, chlorine, acids, suntan creams, sweat, stains and wear.

The stabilisers added for outdoor use and the additives used for dying the thread prevent the formation of bacteria, mold and fungus.

The stitching on the covers is designed with a special thread with a water-repellent finish, that blocks the absorption of water and penetration through to the fabric. Carefully tensioned stitching prevents the passage of water through the needle hole. The water resistance of the fabrics, differs according to their fiber composition and their treatment. To launder the Outdoor covers at home, please follow the instructions represented by the care symbols attached to the product.

OUTDOOR UPHOLSTERIES

Polyester covers: to better protect the upholstery (seat cushions, headrests and backs), all cushions are fitted with a polyester cover whose water repellent treatment offer greater protections and an additional barrier against the penetration of liquids. The covers on Butterfly and Fat-Sofa Outdoor upholstery also offer the additional protection of a heat-sealed ribbon under the stitching, which makes the linings completely waterproof.

Upholsteries: The seat cushions are made of contoured polyurethane, and the backrest cushions are in polyester fiber. To fight the formation of folds and/or wrinkles caused by use, we recommend simply hanging the cover out and beating it manually to remove dust and air from the fibres. If the upholstery accidentally gets wet because of a strong, unexpected shower, we recommend removing the cover and allowing the product to air/sun dry.

Husk Outdoor upholstery: regularly detach the cushion from the frame and fluff it up on all sides. To launder the upholstery at home, follow the care symbols attached to the product. Hang it in the open air to dry. When the product is not being used (for example, in the winter), we recommend you remove the seat and back cushions and place them in a dry, ventilated area.

Where to buy

B&B ITALIA STORES

B&B ITALIA SpA
22060 Novedrate (CO) Italy
Strada Provinciale 32
T. +39 031 795 111
F. +39 031 791 592
www.bebitalia.it - www.maxalto.it

B&B ITALIA NEW YORK (58TH)
150 East 58th Street. Main Floor
New York, NY 10155, USA
T. 212 758 4046
T. 1-800 872 1697 (toll free)
F. 212 758 9155
info.usa@bebitalia.com
www.bebitalia.com

B&B ITALIA NEW YORK (MADISON AVE)
135 Madison Avenue
New York, NY 10016, USA
T. 212 758 4046
info.usa@bebitalia.com
www.bebitalia.com

B&B ITALIA WASHINGTON DC
3320 M. Street NW
Washington, D.C. 20007, USA
T. 202 337 7700
F. 202 337 7900
info.usa@bebitalia.com
www.bebitalia.com

B&B ITALIA LOS ANGELES
8801 Beverly Blvd
Los Angeles, CA 90048
T. 310 278 3191
info@divafurniture.com
www.divafurniture.com

MAXALTO LA
8811 Beverly Blvd
Los Angeles, CA 90048
T. 310 986 6448
info@divafurniture.com
www.divafurniture.com

B&B ITALIA CHICAGO
314 West Superior Street
Chicago, IL 60654
T. 312 335 3855
info@wpachicago.com
www.wpachicago.com

B&B ITALIA MIAMI
4141 NE 2nd Avenue
Miami, FL 33134
info@usa@bebitalia.com
www.bebitalia.com

B&B ITALIA MIAMI
2331 Ponce De Leon Blvd
Coral Gables, FL 33134
T. 305 448 7367
info@luminaire.com
www.luminaire.com

B&B ITALIA DALLAS
1707 Oak Lawn Avenue
Dallas, TX 75207
T. 214.389.9513
info.usa@bebitalia.com
www.bebitalia.com

B&B ITALIA SAN FRANCISCO
2211 Alameda Street
San Francisco, CA 94103
T. 415 565 0900
sales@arksf.com
www.arksf.com

B&B ITALIA SEATTLE
1300 Western Avenue
Seattle, WA 98101
T. 206 287 9992
seattle@divafurniture.com
www.divafurniture.com

B&B ITALIA SUN VALLEY
110 Lindsay Circle
Ketchum, ID 83340
T. 208 928 6379
rob@arsunvalley.com
www.arsunvalley.com

DEALERS USA

ARKITEKTURA IN SITU
2131 Cole Street
Birmingham, MI 48009
T. 248 646 0097
sales@arksf.com
www.arksf.com

ARKITEKTURA IN SITU
Maxalto Shop-in-Shop
560 9th Street,
San Francisco, CA 94103
T. 415 565 7200
sales@arksf.com
www.arksf.com

BE-DESIGN
2016 W. Alabama Street,
Houston, TX 77098
T. 713 623 1177
info@be-design.us
www.be-design.us

CENTRO
4727 McPherson Avenue
St. Louis, MO 63108
T. 314 454 0111
info@centro-inc.com
www.centro-inc.com

CONTEXT
349 Peachtree Hills Ave, Suite B2
Atlanta, GA 30305
T. 477 3301
info@contextgallery.com
www.contextgallery.com

CORE ID
B&B Italia & Maxalto Shop-in-Shop
3700 Old Cantrell Road #103
Little Rock, AR 72202
T. 501 944 2535
www.coreidhome.com
info@coreidhome.com

HIVE
820 NW Glisan Street,
Portland, OR 97209
T. 503 242 1967
info@hivemodern.com
www.hivemodern.com

INSPIRATION
1250 Kapiolani Blvd
Honolulu, HI 96814
T. 808 956 1250
servicehi@inspirationinteriors.com
www.inspirationinteriors.com

JANGEORGE
17 Madison Street #1619
Sag Harbor, NY 11963
T. 631 899 4848
sagharbor@jangeorge.com
www.jangeorge.com

LIGHT SPOT
2927 South Highland Drive
Salt Lake City, UT 84106
T. 801 355 1553
info@lightspotmodernndesign.com
www.lightspotmodernndesign.com

LIVING PENTHOUSE
900 S. Las Vegas Blvd. - PH 1501
Las Vegas, NV 8910
T. 702 750 9404
roberto@eliteidsa.com
www.livingpenthouse.com

LUMATURE
B&B Italia & Maxalto Shop-in-Shop
15620 N Scottsdale Road
Scottsdale, AZ 85254
T. 480 998 5505
sales@lumature.com
www.lumature.com

MONTAGE
B&B Italia & Maxalto Shop-in-Shop
75 Arlington Street
Boston, MA 02216
T. 617 451 9400
info@montageweb.com
www.montageweb.com

MUSEO
3021 Main Street
Kansas City, MO 64108
T. 816 531 3537
info@museousa.com
www.museousa.com

OLC
152 N. 3rd Street
Philadelphia, PA 19106
T. 215 923 6085
info@olc152.com
www.olc152.com

PROJECTS
501 East Locust Street
Des Moines, IA 50309
T. 515 557 1833
sales@projectsfurniture.com
www.projectsfurniture.com

ROAM
2914 Hennepin Avenue
Minneapolis, MN 55408
T. 612 377 6465
info@roaminteriors.com
www.roaminteriors.com

SOFT SQUARE
1507 Fruitville Rd.
Sarasota, FL 34234
T. 941 554 4068
www.softsquare.com

SOFT SQUARE
3078, Tamiami Trail N.
Naples, FL 34103
T. 239 943 9343
www.softsquare.com

SR HUGHES
3410 S. Peoria Avenue, Suite 100
Tulsa, OK 4105
T. 918 742 5515
showroom@srhughes.com
www.srhughes.com

STUDIO COMO
2535 Walnut Street
Denver, CO 80205
T. 303 296 1495
info@studiocomo.com
www.studiocomo.com

STUDIO COMO
90 E. Simpson Avenue, Suite 110
Jackson Hole, WY 83001
T. 307 735 0020
info@studiocomo.com
www.studiocomo.com

STUDIO COMO
109 E. Oak Street, Suite 1C.
Bozeman, MT 59715
T. 406 219 0010
info@studiocomo.com
www.studiocomo.com

STYLUS
1416 Av. Manuel Fernandez Juncos,
San Juan, 00909, Puerto Rico
T. 787 293 0457

SURROUNDINGS HOME DÉCOR
850 West St. Claire Avenue,
Cleveland, OH 44113
T. 216 623 4070
info@shdecor.com
www.surroundingshomedecor.com

URBANSPEACE INTERIORS
801 W. 5th Street, Suite 100
Austin, TX 78703
T. 512 476 0014
www.urbanspaceinteriors.com
shop@urbanspaceinteriors.com

VOLTAGE
B&B Italia & Maxalto Shop-in-Shop
3209 Madison Road
Cincinnati, OH 45209
T. 513 871 5483
info@voltagefurniture.com
www.voltagefurniture.com

WALTERS WICKER, INC
979 Third Avenue, Suite 538
New York, NY 10022
T. (212) 758-0472
info@waltersnyc.com
www.waltersnyc.com

WEISSHOUSE
324 S. Highland Ave
Pittsburgh, PA 15206
T. 412 441 8888
info@weisshouse.com
www.weisshouse.com

DEALERS CANADA

INFORM INTERIORS
B&B Italia & Maxalto Shop-in-Shop
97 Water Street
Vancouver, BC V6B 1A1
T. 604 682 3868
info@informinteriors.com
www.informinteriors.com

KIOSK
B&B Italia & Maxalto Shop-in-Shop
288 King Street East
Toronto, ON M5A 1K4
T. 416 539 9665
contact@kioskdesign.ca
www.kioskdesign.ca

LE BELLE ARTI
16844 111 Avenue NW
Edmonton, AB T5M 4C9
T. 780 454 0677
info@lebellearti.com
www.lebellearti.com

LE BELLE ARTI
B&B Italia & Maxalto Shop-in-Shop
1435 9 Avenue SE,
Calgary, AB T2G OT4
T. 403 234 9700
calgary@lebellearti.com
www.lebellearti.com

MOBILIER AVANT-SCENE
620 Rue St-Paul W,
Montreal, QUE H3C 1L9
T. 514 281 6782
contact@avant-scene.com
www.avant-scene.com

